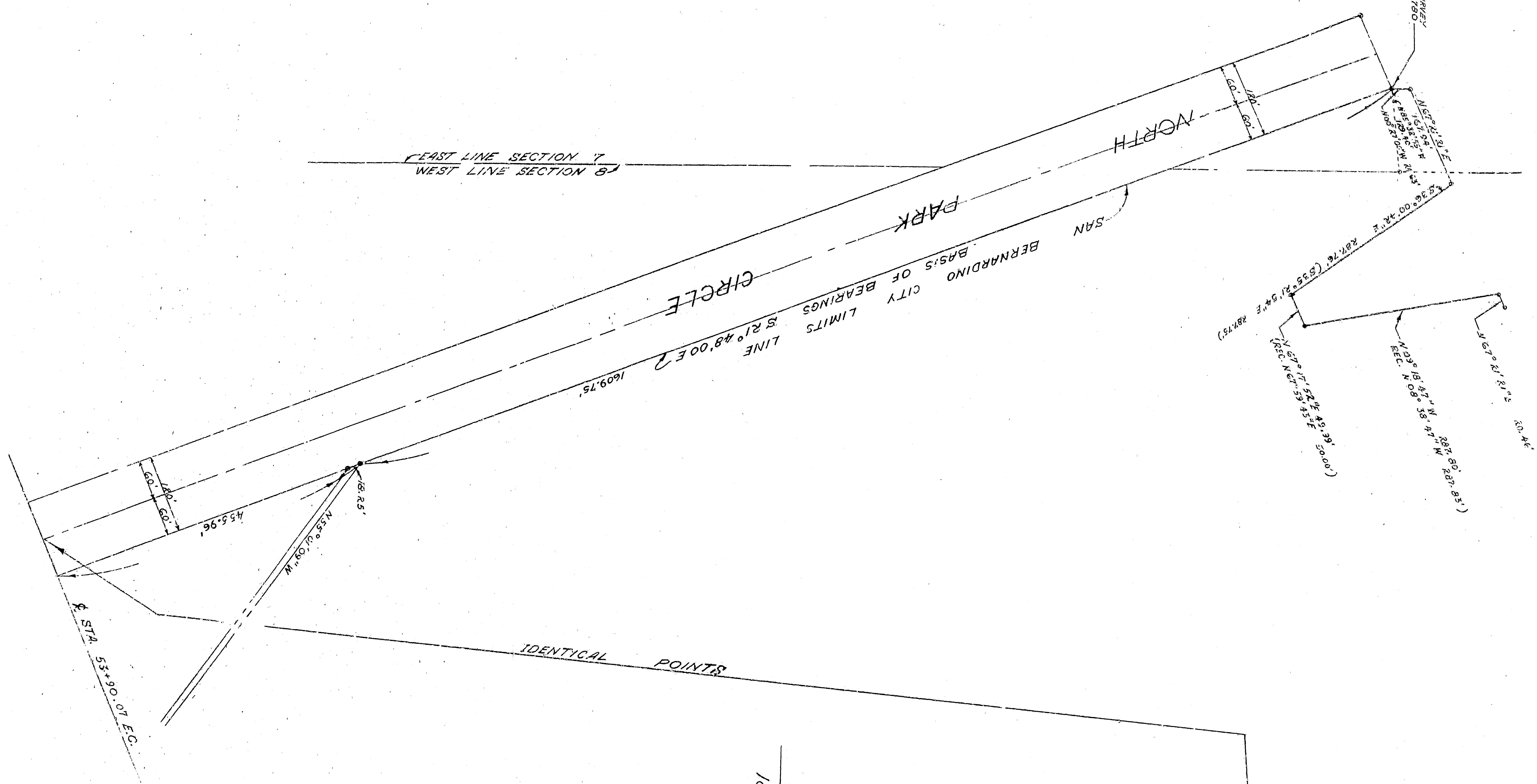


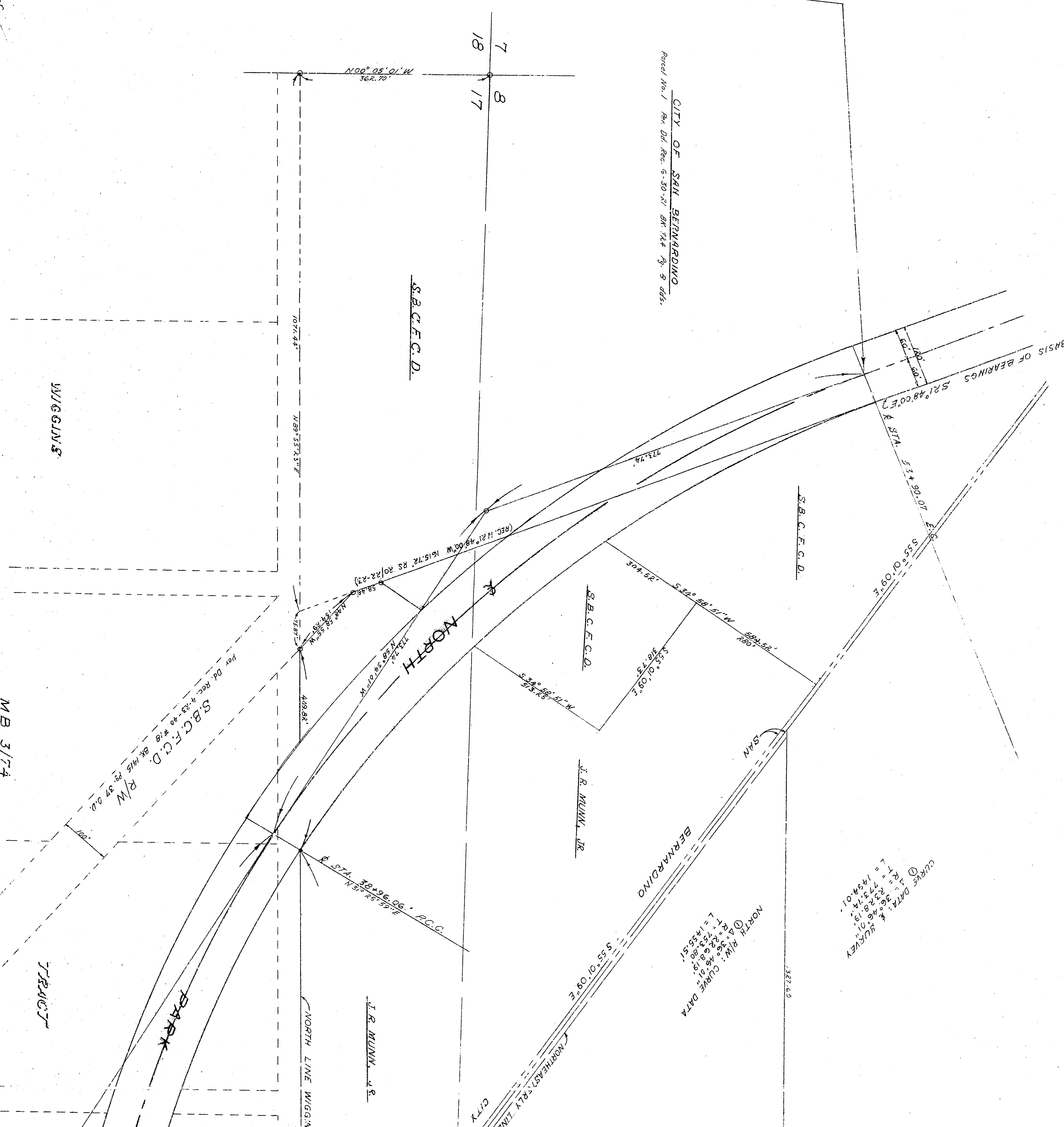
SECTION 14, 35 & 36, QUINCY, BERNARDINO COUNTY, REGISTERED FILE NO. 780

EAST LINE SECTION 7
WEST LINE SECTION 8



IDENTICAL POINTS

CITY OF SAN BERNARDINO
Parcel No. 1, Plan Div. Rec. 5-30-71, Bk. 14, P. 9, dds.



CURVE DATA
R = 366.61
L = 73.32
T = 14.44
M = 14.44

NORTH R/W: CURVE DATA
R = 366.61
L = 73.32
T = 14.44
M = 14.44
CITY

M.B. 3/74

TRAJECT

PARK

I.R. MUNN, JR.

CITY

BERNARDINO

I.R. MUNN, JR.

NORTH

S.B.C.F.C.D.

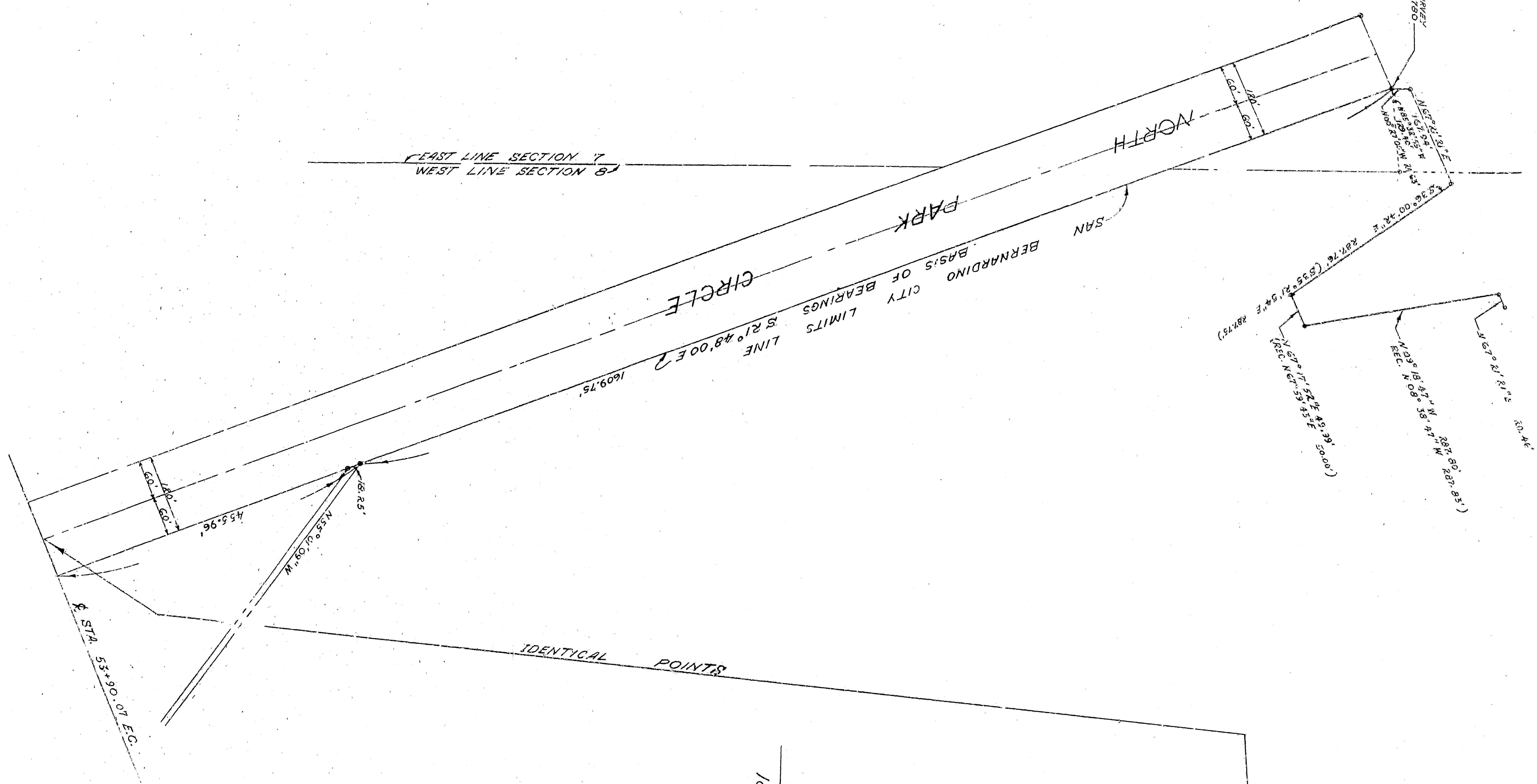
S.B.C.F.C.D.

S.B.C.F.C.D.

WYGLINS

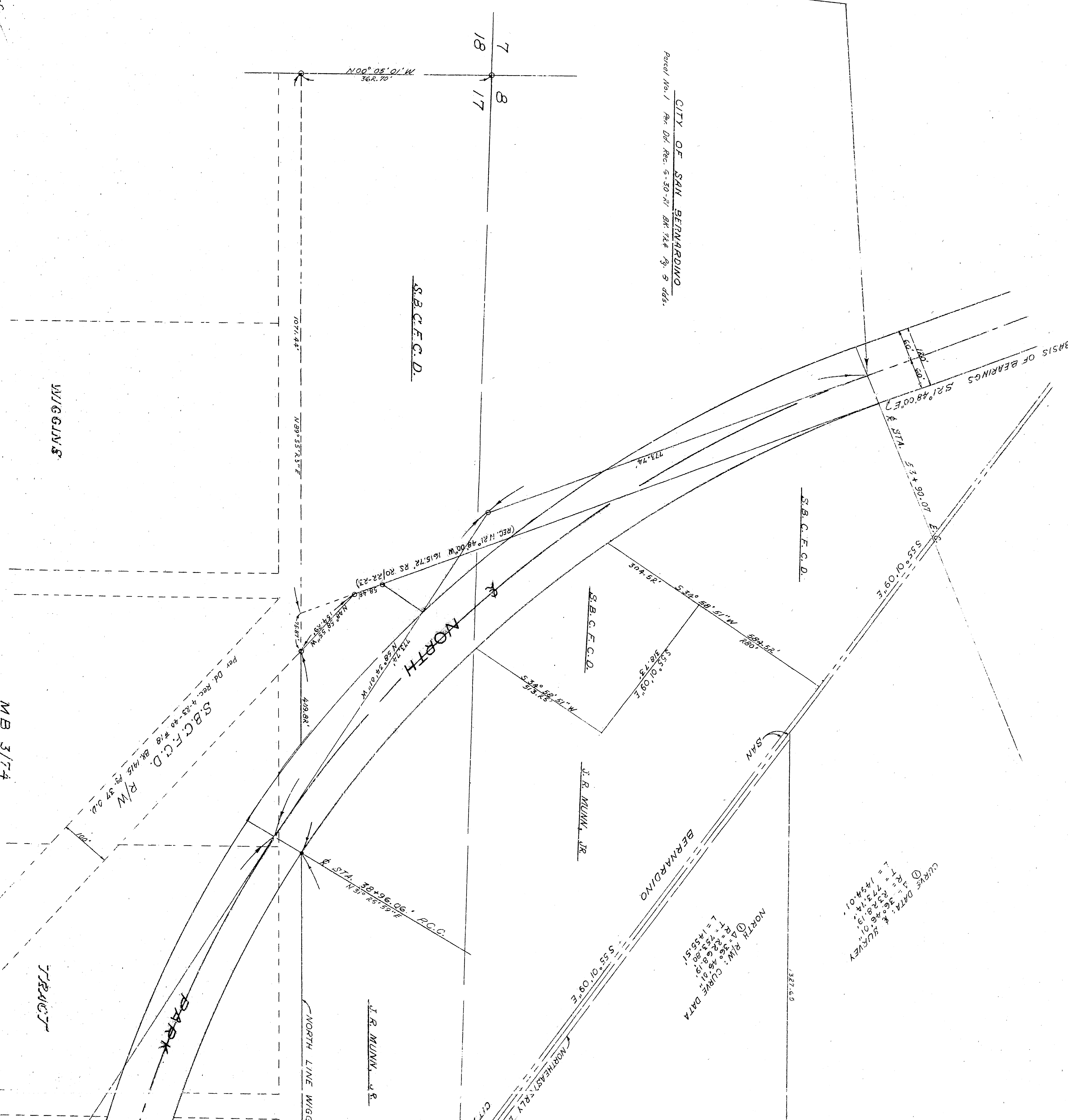
SECTION 14, 35 & 36, QUINCY, BERNARDINO COUNTY, REGISTERED FILE NO. 780

EAST LINE SECTION 7
WEST LINE SECTION 8



IDENTICAL POINTS

CITY OF SAN BERNARDINO
Parcel No. 1, Plan Div. Rec. 5-30-71, Bk 144, P. 9, dds.



CURVE DATA
R = 36.66
L = 73.32
T = 143.40
M = 14.40

NORTH R/W: CURVE DATA
R = 36.66
L = 73.32
T = 143.40
M = 14.40